



## C12 ACERT™ COMPACT MARINE PROPULSION

669 mhp  
(660 bhp)  
492 bkW

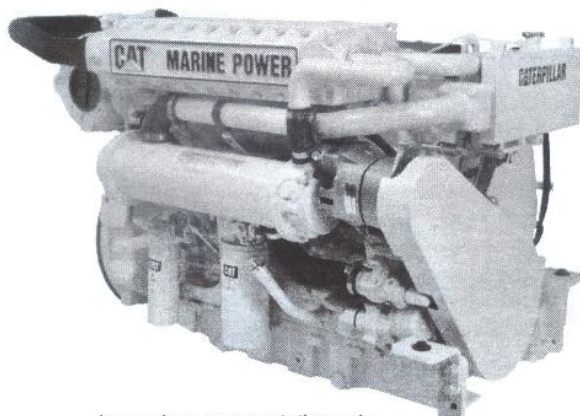


Image is a representation only,  
and may not show optional  
attachments.

### SPECIFICATIONS

#### I-6, 4-Stroke-Cycle-Diesel

Emissions	EPA Tier II and IMO Compliant
Displacement	12 L (732 cu. in.)
Rated Engine Speed	2300
Bore	130.0 mm (5.1 in.)
Stroke	150.0 mm (5.9 in.)
Aspiration	Turbocharged-Aftercooled
Governor	Electronic
Cooling System	Heat Exchanger
Weight, Net Dry (approx)	1,174 kg (2,588 lb)
Refill Capacity	
Cooling System	45 L (12.0 U.S. gal)
Lube Oil System	28 L (7.5 U.S. gal)
Oil Change Interval	250 hrs
Caterpillar Diesel Engine Oil 10W30 or 15W40	
Center Sump Oil Pan	
Rotation (from flywheel end)	Counterclockwise
Flywheel and Flywheel Housing	SAE No. 1
Flywheel Teeth	113

### STANDARD ENGINE EQUIPMENT

#### Air Inlet System

Corrosion resistant sea water aftercooler, air cleaner/fumes disposal (closed system), jacket water cooled turbocharger

#### Control System

Electronic governing, cold mode start strategy, power compensation for fuel temperature, programmable low idle, electronic diagnostics and fault logging, engine and transmission monitoring (speed, temperature, pressure), fuel/air ratio control

#### Cooling System

Thermostat and housing, gear-driven jacket water pump, self-priming, gear-driven sea water pump with rubber impeller, integral heat exchanger/expansion tank with removable tube bundle and replaceable copper-nickel tubes

#### Exhaust System

Watercooled exhaust manifold and turbocharger

#### Flywheels & Flywheel Housings

SAE No. 1 flywheel, 113 teeth, SAE No. 1 flywheel housing (10 degree slant pad), SAE standard rotation

#### Fuel System

Fuel filter, RH service on port, LH service on starboard, fuel transfer pump, fuel priming pump, flexible fuel lines

#### Instrumentation

Electric service meter

#### Lube System

Crankcase breather, oil cooler, spin-on oil filter, RH service on port, LH service on starboard, center sump oil pan, oil filler, dipstick, RH service on port, LH service on starboard, gear-driven oil pump

#### Mounting System

Front support

#### Power Take-Offs

Hydraulic pump drive, SAE A, 11 tooth spline, 57 ft-lbs max torque, counterclockwise as viewed from rear of the engine looking into the pump drive and turns 1.41 x engine speed, 345 mm crankshaft pulley, 15.88 mm width single groove

#### Protection System

12 or 24 volt electronic shutdown (energized-to-run)

#### General

Vibration damper, lifting eyes, RH or LH service options, literature, variable engine wiring, upper rear-facing customer wiring connector and ECAP connection, electronic installation kit (connectors, pins, sockets)

#### ISO Certification

Factory-designed systems built at Caterpillar  
ISO9001:2000 certified facilities

